

## FLAT TRIM SUBMITTAL : DIMENSIONS

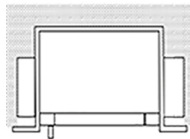
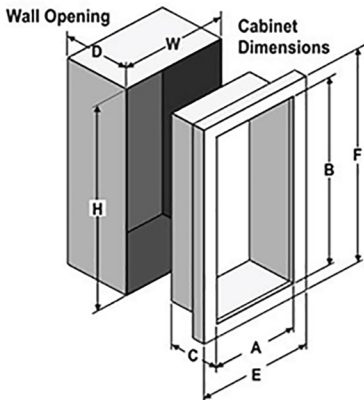
TRIM & DOOR SERIES #		Tub I.D.			Frame O.D.		Wall Opening		
Model	Trim Style	A	B	C	E	F	W	H	D
1825	Flat 3/8" Trim	10 1/2	24	5 1/2	13 7/8	27 3/8	12 13/16	26 5/16	6 7/16
1025	Flat 3/8" Trim	10 1/2	24	6	13 7/8	27 3/8	12 13/16	26 5/16	6 15/16
2025	Flat 3/8" Trim	12	27	7 3/4	15 3/8	30 3/8	14 5/16	29 5/16	8 11/16
3025	Flat 3/8" Trim	16	32	7 3/4	19 3/8	35 3/8	18 5/16	34 5/16	8 11/16
4025	Flat 3/8" Trim	20	27	7 3/4	23 3/8	30 3/8	22 5/16	29 5/16	8 11/16

## TRIMLESS SUBMITTAL : 5/8 DRYWALL OVER DIMENSIONS

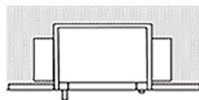
TRIM & DOOR SERIES #		Tub I.D.			Frame O.D.		Wall Opening		
Model	Trim Style	A	B	C	E	F	W	H	D
1024	Trimless	10 1/2	24	6	13 5/8	27 1/8	12 13/16	26 5/16	6 11/16
2024	Trimless	12	27	7 3/4	15 1/8	30 1/8	14 5/16	29 5/16	8 7/16

## TRIMLESS SUBMITTAL : 3/4 PLASTER OVER DIMENSIONS

TRIM & DOOR SERIES #		Tub I.D.			Frame O.D.		Wall Opening		
Model	Trim Style	A	B	C	E	F	W	H	D
1024	Trimless	10 1/2	24	6	13 5/8	27 1/8	12 13/16	26 5/16	6 11/16
2024	Trimless	12	27	7 3/4	15 1/8	30 1/8	14 5/16	29 5/16	8 7/16



**3/8" Flat Trim**



**Trimless  
Recessed Flange**